

# **GRANT OUTCOMES AND PROGRESS MONITORING**

---

## **FY26 School Improvement Grant Webinar**

**October 16, 2025**



**Department of  
Education &  
Workforce**

# SCHOOL IMPROVEMENT GRANTS TEAM

---

- **Jackie Carlin**, Assistant Administrator
- **Katharine Delavan**, School Improvement Grants Manager
- **Dan Sipek**, Educational Program Specialist
- **David Cloud**, Rural Liaison
- **Chavon Harris**, Management Analyst

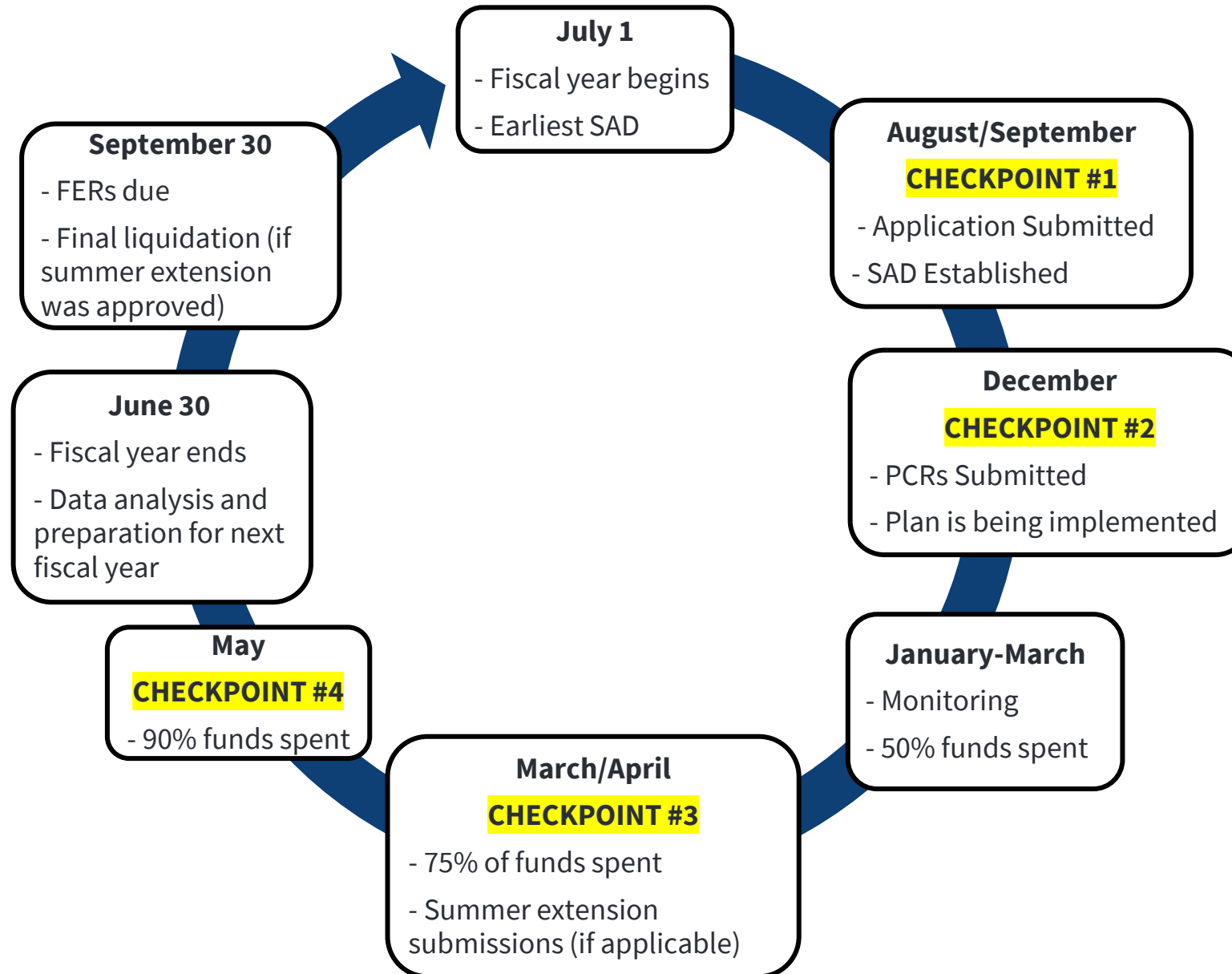


# OBJECTIVES

---

- 1. Review** SMART format
- 2. Discuss** student and adult outcomes expectations.
- 3. Review** grant progress monitoring expectations.
- 4. Review** of the annual DEW grant monitoring process.
- 5. Discussion** and Q&A

# SCHOOL IMPROVEMENT GRANT LIFE CYCLE



# GRANT OUTCOMES ARE NECESSARY

---

- They allow grantees to show the impact grant funds had on students **and** adults at the **identified** buildings.
- Student **and** adult outcomes are central to grant implementation. They provide an anchor to maintain focus throughout the life of the grant.
- Grant outcomes provide a level of accountability beyond fiscal accountability.
- The goal is to lead to improved school performance through proper monitoring and implementation.

# EFFECTIVE OUTCOME GOALS

---

- Are concise, only one-two sentences long.
  - Not a narrative, stick to the SMART elements and keep it brief.
- Aligned to the One Plan **and** reason for the school's identification.
- Only measure activities funded by the grant.
- Growth goal is set based on data that shows student needs.

# EFFECTIVE GOALS AND OUTCOMES



- A well-written goal should be understood by anyone who reads it.
- SMART format:
  - **Specific:** What do you want to achieve?
  - **Measurable:** When do you want to achieve it and how what is the frequency of progress monitoring(Monthly, Trimester, Quarterly)?
  - **Achievable:** How is it attainable, realistic and reasonable?
  - **Relevant:** Aligned to the One Plan and reason for the school's identification.
  - **Time-Bound:** What is the specific deadline within the life of the grant?

# EXAMPLE: STUDENT OUTCOME



By the end of May 2026, the Reading NWEA Map Assessment of K-3 Students will be administered in the fall, winter, and spring, with an increase of 10% of students in each grade moving from off track to on track from Fall to Winter, and 20% of students moving from off track to on track from Fall to Spring, as measured by the student RIT scores.

# EXAMPLE: STUDENT OUTCOME CONT'D

By the end of May 2026, the Reading NWEA Map Assessment of K-3 Students will be administered in the fall, winter, and spring, with an increase of 10% of students in each grade moving from off-track to on-track from Fall to Winter, and 20% of students moving from off track to on track from Fall to Spring, as measured by the student RIT scores.



SPECIFIC

Off-track students as measured by the Reading NWEA Map Assessment



MEASURABLE

Increase of 10% of students moving from off-track to on-track from Fall to Winter and 20% from Fall to Spring; **and** RIT scores



ATTAINABLE

Reasonable improvement throughout the academic year



RELEVANT

Related to focus area of the grant – improved performance in literacy



TIME-BOUND

By the end of May 2026; **and** Fall, Winter, and Spring

# EXAMPLE: ADULT OUTCOME



By June 30, 2026, at least 80% of teachers who participated in monthly coaching cycles will demonstrate proficiency in using a new reading intervention strategy, as measured by a pre- and post-observation rubric.

# EXAMPLE: ADULT OUTCOME CONT'D

By June 30, 2026, at least 80% of teachers who participated in monthly coaching cycles will demonstrate proficiency in using a new reading intervention strategy, as measured by a pre- and post-observation rubric.

S



SPECIFIC

Teachers who participated in monthly coaching

M



MEASURABLE

80% of teachers who participated in the monthly coaching cycles; **and** demonstrating proficiency with pre- and post-observation rubric

A



ATTAINABLE

Demonstrating proficiency from coaching by the end of the school year

R



RELEVANT

Teachers receiving coaching related to literacy focus of grant

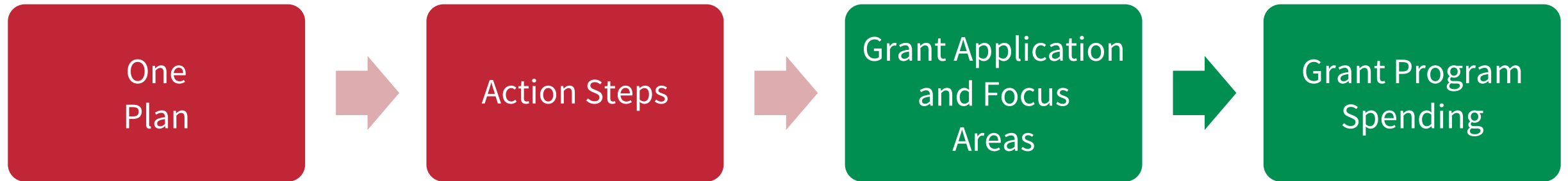
T



TIME-BOUND

By June 2026

# FUND YOUR ONE PLAN



The goals in the One Plan are for 3 years. Can you easily convert this to an annual grant outcome?

# THE ONE PLAN AND GRANT OUTCOMES

## From the One Plan - SMART Goal Statement:

By **06/30/2028** we will improve the **performance** of **All Students, All Grades** students at/in **ABC High School** to **increase 10.00 % to a target of 54% proficiency** in **Algebra 1 and ELA II** using **State Report Card - Achievement Component**.

## Adjusted Student Outcome for the grant:

By June 30, 2026, the school will improve proficiency in ELA II for SWD in Grade 10 by 3% through Tier 2 and Tier 3 instructional supports. Assessments will be conducted monthly through competency checks.

## Adjusted Adult Outcome for the grant:

Every month during the school year, walkthrough data of Tier 2 and Tier 3 instructional supports from the Intervention Specialists will be monitored by the principal using the observation rubric, with an annual improvement of increase 20%.

# PROGRESS MONITORING

---

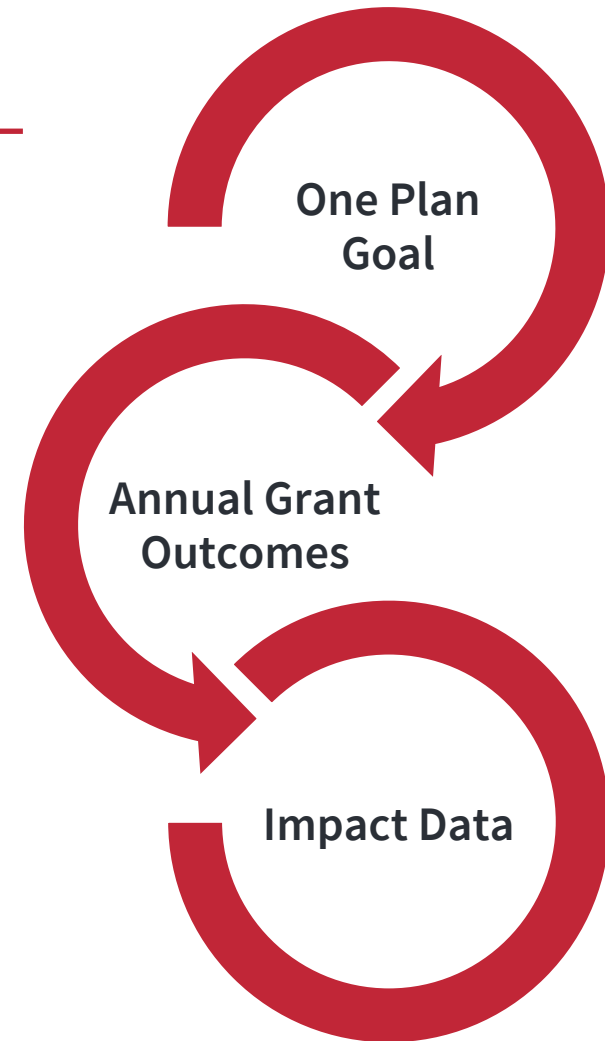
- Is a critical part of grant implementation.
- Must have regularly scheduled dates to collect, analyze and discuss data.
- Allows you to shift your approach, if necessary, based on data.
- Allows you to provide immediate intervention, based on data.
- Supports incremental growth over time.



# GRANT IMPLEMENTATION MONITORING TOOLS

---

1. Springfield City Schools Example
2. Akron Public Schools Example





# GRANT PROGRESS MONITORING EXPECTATIONS

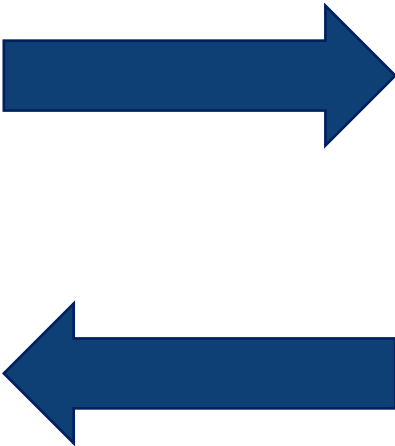
- LEAs are expected to progress monitor grant implementation and student and adult outcomes. This includes:
  - Quarterly PCR submissions
  - Quarterly monitoring of student and adult outcomes
  - Completion of assigned annual monitoring survey which could include uploading outcomes data and fiscal documentation

# COHESION BETWEEN PROGRAM IMPLEMENTATION AND FISCAL MANAGEMENT

**Fiscal Management**



ThePhoto by PhotoAuthor is licensed under CCYSA.



**Program Implementation**

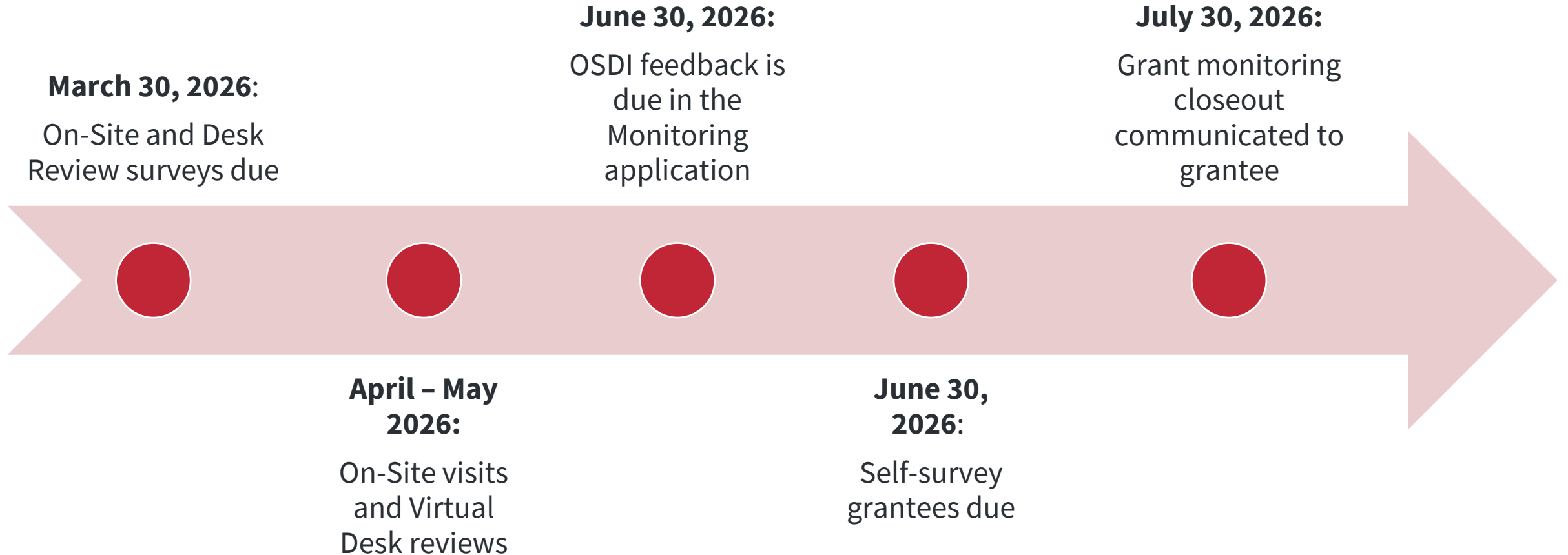


ThePhoto by PhotoAuthor is licensed under CCYSA.

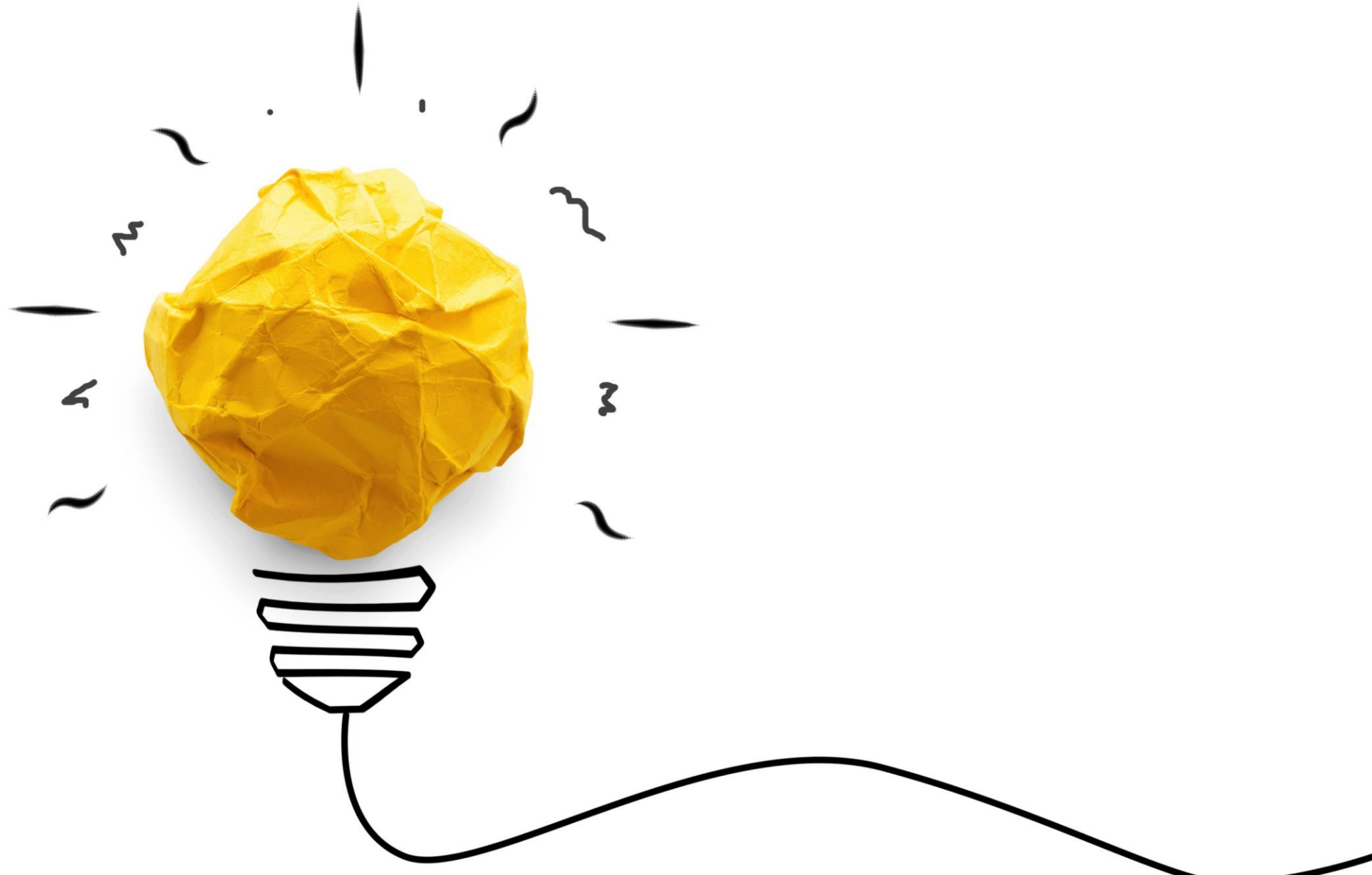
# GRANTS MONITORING OVERVIEW

- Grantees will be notified of monitoring status in December. The email is sent to the Superintendent/School Leader, Treasurer and Grant Contact. Please ensure OEDS is updated.
  - **On-site Review-** requires fiscal and programmatic documents to be uploaded
  - **Desk Review-** requires fiscal and programmatic documents to be uploaded
  - **Self-Survey-** does not require documents to be upload.

# FY26 MONITORING TIMELINE (ESTIMATED)



*All dates are subject to change.*



# EXIT TICKET

**We welcome and appreciate your feedback. Please take a few minutes to complete the Exit Ticket.** [Exit Ticket Link](#)

FY26 SI Grant Webinar- Grant  
Outcomes and Progress  
Monitoring 10/16/25-Exit Ticket



# FY26 WEBINAR SCHEDULE

---

- **FY26 TBD:** Thursday, November 20, at 1pm. Register [HERE](#).
- **FY26 TBD:** Thursday, December 18, at 1pm. Register [HERE](#).



Department of  
Education &  
Workforce

# OASFEP SUPPORT

---

Join us LIVE and IN PERSON on October 27 in the lobby at the OASFEP Conference for application support.

Sign up for a 15-minute session [here](#) or you can drop by at anytime from 9am to 4pm.



**Department of  
Education &  
Workforce**

# CONTACT THE GRANT TEAM

- **Jackie Carlin:** 614-961-0178  
| [Jaclyn.Carlin@education.ohio.gov](mailto:Jaclyn.Carlin@education.ohio.gov)
- **Katharine Delavan:** 614-593-0261  
| [Katharine.Delavan@education.ohio.gov](mailto:Katharine.Delavan@education.ohio.gov)
- **Dan Sipek:** 614-965-4773  
| [Daniel.Sipek@education.ohio.gov](mailto:Daniel.Sipek@education.ohio.gov)
- **David Cloud:** 614-738-5768  
| [David.Cloud@education.ohio.gov](mailto:David.Cloud@education.ohio.gov)

## Schedule a Virtual Meeting:

- [Schedule a meeting with Katharine and Dan](#) (TI NC SSI)
- [Schedule a meeting with Jackie](#) (EOEC NC)

# RESOURCES

---

## EOEC NC

1. [FY26 EOEC NC Guidance](#)
2. [Budget Grid Template](#)
3. [Application Checklist](#)

## TI NC SSI

1. [FY26 TI NC SSI Guidance](#)
2. [Budget Grid Template](#)
3. [Application Checklist](#)

**NEW** – [FY26 School Improvement Grants Implementation Guidance](#)

# QUESTIONS?

---

EDUCATION.OHIO.GOV



**Department of  
Education &  
Workforce**

# THANK YOU

---

EDUCATION.OHIO.GOV



**Department of  
Education &  
Workforce**